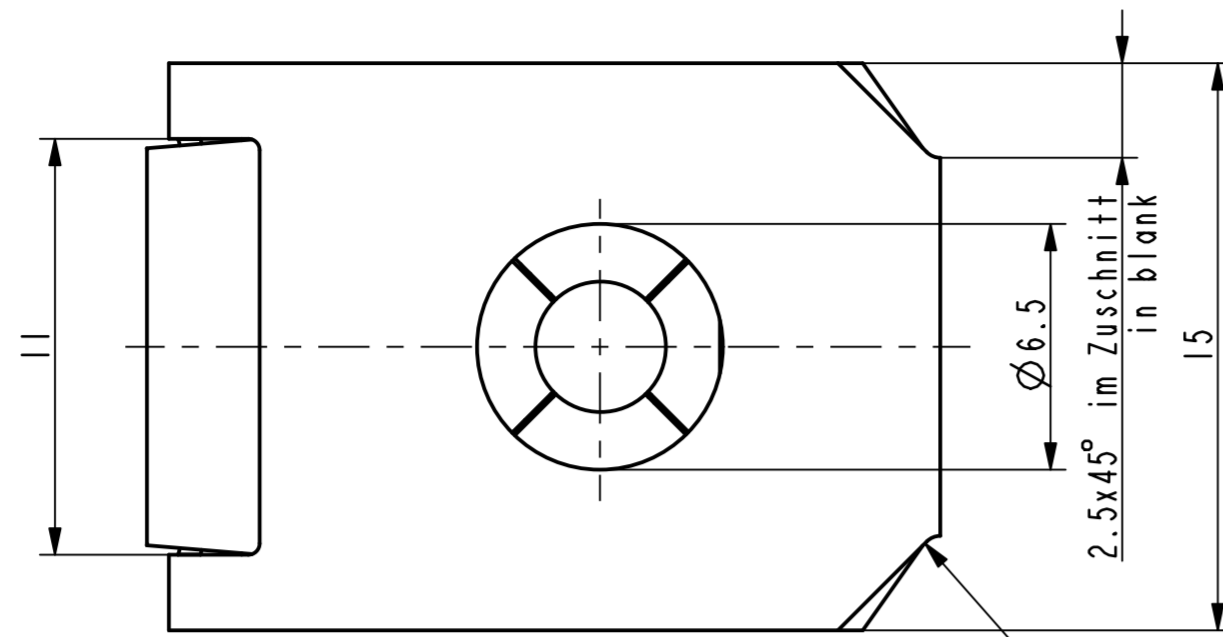
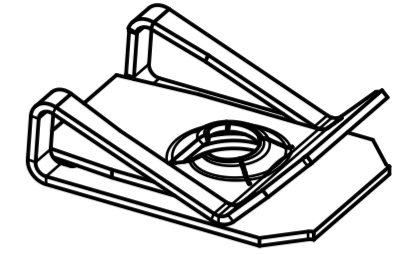


Vor Auslegung einer automatisierten Verarbeitung des Teils sollte Rücksprache mit Fa. A.Raymond gehalten werden.  
Fully automatic processing of the part requires prior consultation with A.Raymond GmbH.

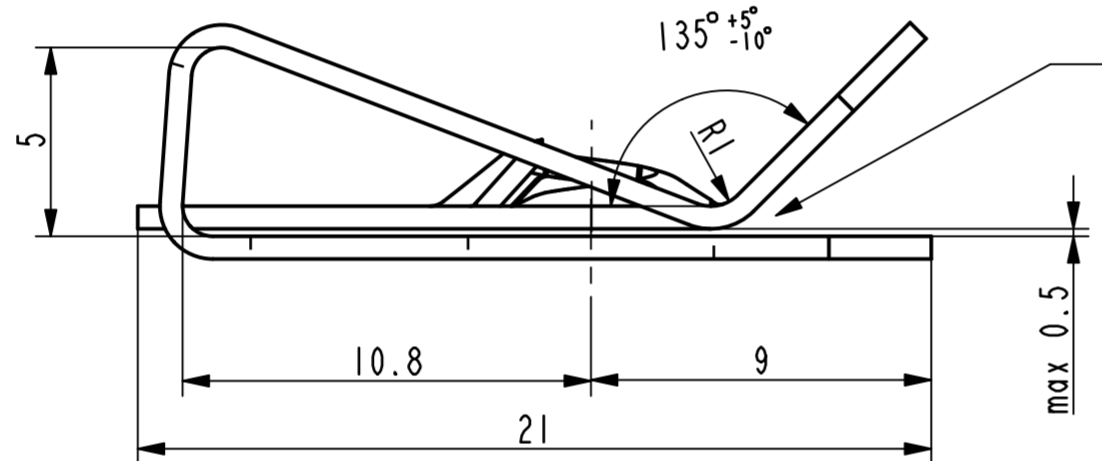


Anzugsdrehmoment max 6 Nm  
gueltig fuer Schraube u. Blechmutter  
mit den Oberflaechenbeschichtungen  
verzinkt/passiviert, farblos /  
Tightening torque max 6 Nm  
valid for sheet metal nut and screw  
with the surface coating  
zinc-plated / passivated, colourless

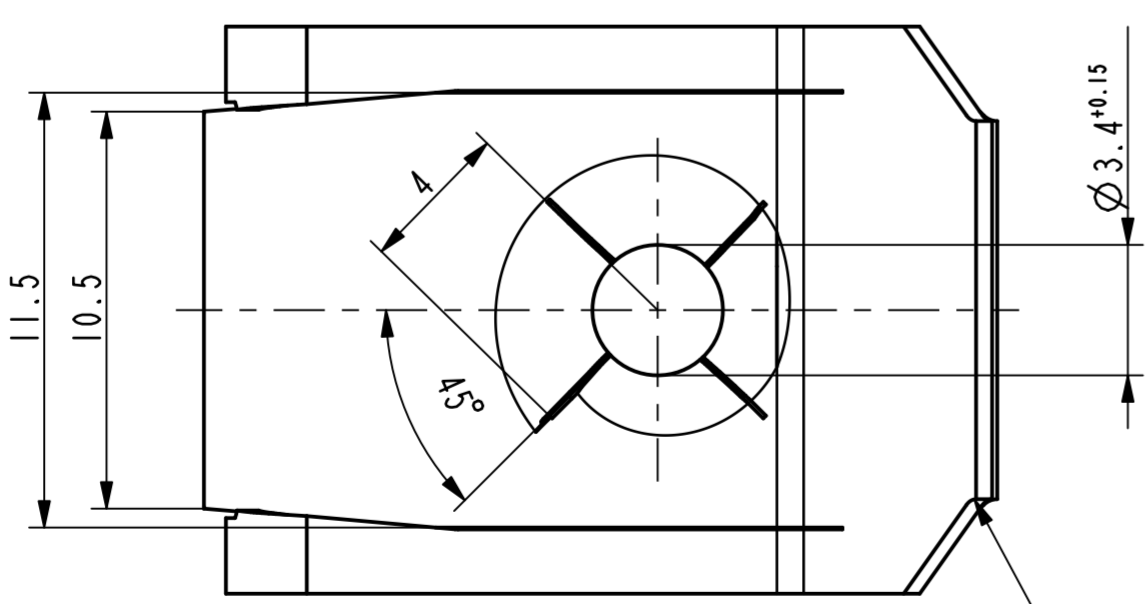


3D-Ansicht /  
isometrical view  
2:1

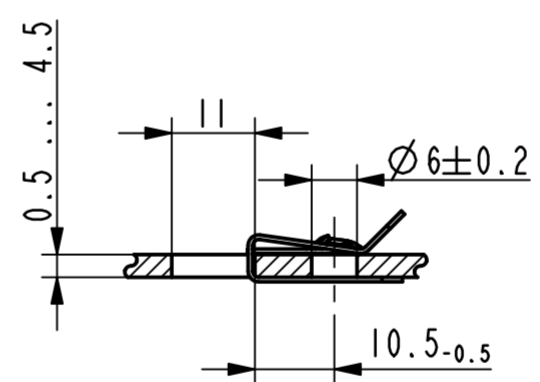
Ausklinkung zulaessig /  
cut-out permissible



Ueberbrueckung der Oeffnung durch metallhaltige  
Korrosionsschutzbeschichtung zulaessig /  
surface finish bridging permissible



Ausklinkung zulaessig /  
cut-out permissible



Einbausituation /  
assembly situation  
1:1

nicht bemaste Biegeinnenradien R0.8 /  
undimensioned bendradii R0.8

Rev.	Anzahl/quality	Aenderungsbeschreibung / modification description	Datum/date	Name
Cc	-	Oberflaechenvariante entfernt (3000, 3300, 7420)	20.10.10	mj

**A Raymond**  
GmbH & Co. KG  
Teichstrasse 57  
Germany - 79511 Loerrach  
Phone +49 (0) 7621 174-0  
Fax +49 (0) 7621 174-225

Bei Verstaendnisproblemen beantragen Sie bitte beim Absender die deutsche Fassung vor jeder Anwendung.  
"CONDITIONS OF USE"  
This drawing and all information (the "Drawing") disclosed are the exclusive property of A.Raymond.  
By using this Drawing the Addressee acknowledges and accepts that this Drawing (1) is covered by A.Raymond' intellectual property rights or know-how and (2) is provided under the following conditions who represent a Deposit Agreement.  
This Drawing is for Addressee' internal use only limited to its estimation.  
Without prior written consent of A.Raymond, no permission or rights for any purpose, is hereby granted, such as, without any limitation, (1) the copy, in part or entirely, (2) and/or the presentation, in part or entirely, to any other third party outside the Addressee' company or in the company but with no interest (3) and/or the distribution of the Drawing, in part or entirely, in any medium (4) and/or the creation of any derivative work.  
In case of breach of these conditions, Addressee shall indemnify A.Raymond from and against all damages (compensatory or consequential), costs, expenses and charges, caused or arising out of or attributable to its willful misconduct, fraud, negligence, infringement of A.Raymond' intellectual property rights. If the Addressee does not accept these conditions, please notify A.Raymond' sender immediately.

Schutzrechte/ patent rights	vorbehalten / all rights reserved		Resch Code/ classification	AAAAE
Ersatz fuer/ substitute for	014043.c.01/Cb/10.11.2006	Entw.Ref./ dev.ref.		
Masstab/ scale	5:1	Format	A2	Allgemeintoleranz/ general tolerance
Projektion / projection	ALL DIMENSIONS ARE IN MILLIMETERS		Datum/ date	20.10.2010
Blechklaesse/ mat. thickness DIN EN 10140	0.60	Erstellt von/ prepared by	M. Junge	
		Freigegeben/ approved	20101021075353	
		Volumen/ volume (mm³)	348.5	Gewicht/ weight (g)
				2.8

Oberfl./  
finish  
metallhaltige Korrosionsschutzbeschichtung, Farbe silber  
metallic corrosion protection coated, colour silver  
Oberfl. Code/  
finish code  
5410

Werkstoffbehandl./  
material treatment  
zwischenstufenverguetet / austempered  
375 ... 475 HV 5

Werkstoff/  
material  
C67S DIN EN 10132-4  
Mat. code  
1000

Bezeichnung/  
title  
Blechmutter  
fuer Gewinde EN ISO 1478 - ST-4.8, selbstsichernd  
sheet metal nut  
for thread EN ISO 1478 - ST-4.8, selflocked

Teil-Nr./  
part no.  
014043-0-03  
Drawing type  
Customer

Kundenteile-Nr. / customer part no. -  
Blatt / sheet 1 / 1

014043-0-08	verzinkt / passiviert farblos zinc plated / passivated colourless	3250
014043-0-06	metallhaltige Korrosionsschutzbeschichtung, Farbe silber metallic corrosion protection coated, colour silver	5412
014043-0-04	metallhaltige Korrosionsschutzbeschichtung, Farbe schwarz / impraegniert metallic corrosion protection coated, colour black / oiled	5436
Teil-Nr. / part no.	Oberflaechen / Farbe / finish / colour	Oberfl. Code/ finish code
Ausfuhrung / Execution		

