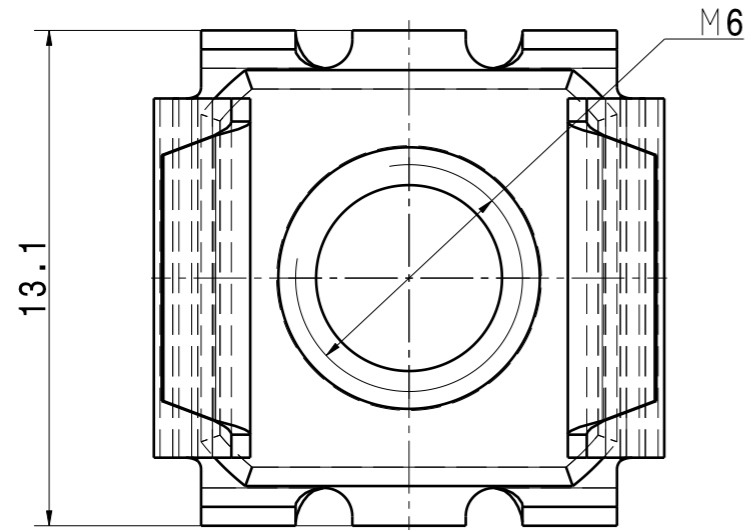
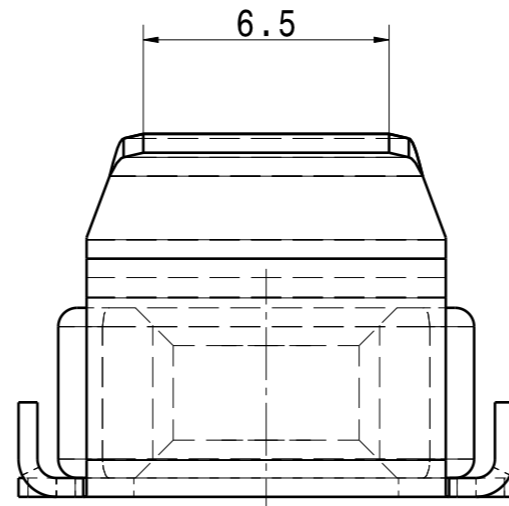
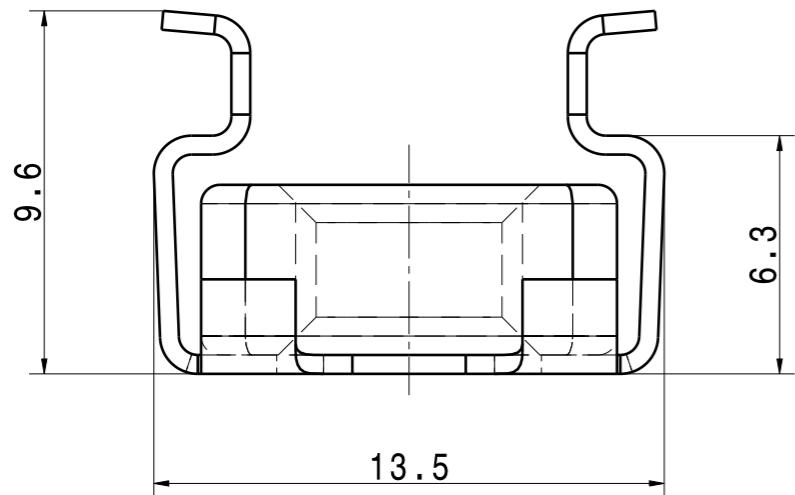
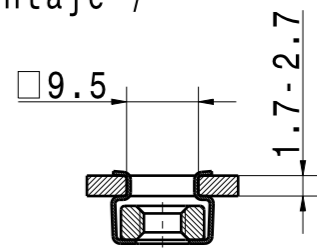


Cuerpo / Body	Variante / Variant	Material / Material	Traitamiento / Material treatments	Acabado / Finishes	Cant. / Qty
230291-Nut_M6	00	Aceros al carbono Carbon steel	-	Zn 8µ min, pas. transparente / RNS:96h Zn plated 8µ min, colourless pas. / NSS:96h	1
230291-Cage	00	C67S EN 10132-4	Templado Austempered	Zn 8µ min, pas. transparente / RNS:96h Zn plated 8µ min, colourless pas. / NSS:96h	1

El proceso de montaje en automático de la pieza requiere previamente la consulta a A.Raymond Tecniacero.  
Automatic processing of the part requires prior consultation with A.Raymond Tecniacero.

Condiciones de montaje /  
Assembly conditions:



Aa	-	Revisión inicial / Initial release	17.06.13	JGA
REV.	Quant.	Indice / revision description	Date	Name



Ctra. Manresa a Berga km 0,5  
Spain - 08272 Sant Fruitós de Bages  
Tel +34 938 771 314  
Fax +34 938 770 260

Si tuvieran problemas de comprensión, por favor soliciten la versión española a ARaymond antes de usar este plano.  
"CONDITIONS OF USE"  
This drawing and all information (the "Drawings") disclosed are the exclusive property of A.Raymond. By using this Drawing the Addressee acknowledges and accepts that this Drawing (1) is covered by A.Raymond intellectual property rights or know-how and (2) is provided under the following conditions who represent a Deposit Agreement. This Drawing is for Addressee internal use only limited to its estimation. Without prior written consent of A.Raymond, no permission or rights for any purpose, is hereby granted, such as, without any limitation, (1) the copy, in part or entirely (2) and/or the presentation, in part or entirely, to any other third party outside the Addressee company or in the company but with no interest (3) and/or the distribution of the Drawings, in part or entirely, in any medium (4) and/or the creation of any derivative work. In case of breach of these conditions, Addressee shall indemnify A.Raymond from and against all damages (compensatory or consequential), costs, expenses and charges, caused or arising out of or attributable to its willful misconduct, fraud, negligence, infringement of A.Raymond Intellectual Property rights. If the Addressee does not accept these conditions, please notify A.Raymond sender immediately.

Ref. patentes / Patent rights		Codigo SAFIX / Classification	
		AI-CC	
Nº Proyecto / Project No.	Sustituye / Origin	Resp de proyecto / Project Manager	
	230291-1-Aa	PADULLES.S	
Escala / scale	Format	Tolerancias generales / General tolerance	Fecha / date
5:1	A3	Cf nota Cf nota	17.06.2013
ALL DIMENSIONS ARE IN MILLIMETERS		Aprobado / Approved	20130617093725
Espesor mat. / Mat. thickness		Volumen / volume (mm³)	Peso / Weight (g)
0,50		598,7	4,7

Acabado / finish  
See parts list  
Ver dibujo

Tratamiento mat. / Material treatment  
See parts list  
Ver dibujo

Material / Material  
See parts list  
Ver dibujo

Denominación / Title  
**Tuerca métrica enjaulada M6**  
**Metric pitch nut**  
**M6 cage nut**

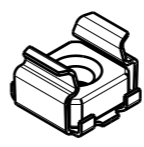
Número / Part no.  
**230291-0-00**

Ref. cliente / Customer part no.

CAD system & version CATIA V5 R19 SP9 Nombre fichero / Filename 230291-0C00

VERIFICAR LA ESCALA DESPUÉS DE LA FOTOCOPIA / BEWARE SCALE AFTER COPY

>400 <= 1000	±2
>120 <= 400	±1.5
> 30 <= 120	±1
> 6 <= 30	±0.5
<= 6	±0.25
Angulo / Angle	±3°
Tolerancias generales para cotas sin especificar. General tolerances for nominal dimensions without specified tolerances.	



Vista isométrica  
Isometric view  
Escala / Scale: 1:1

4  
3  
2  
1

4  
3  
2  
1