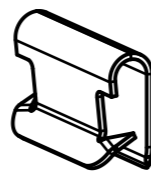


Einbausituation /
assembly situation
2:1



Isometrische Ansicht /
isometric view
2:1

012070-0-04	metallhaltige Korrosionsschutzbeschichtung, Farbe silber, GZ metallic corrosion protection coated, colour silver, lubricated	4001
012070-0-02	metallhaltige Korrosionsschutzbeschichtung, Farbe silber metallic corrosion protection coated, colour silver	5410
Teil-Nr. / part no.	Oberflaeche / Farbe / finish / colour	Oberfl. Code/ finish code
Ausfuehrung / Execution		

Vor Auslegung einer automatisierten Verarbeitung des Teils sollte Ruecksprache mit Fa. ARaymond gehalten werden.
 Fully automatic processing of the part requires prior consultation with ARaymond.

-	-	-	-	-
-	-	-	-	-
-	-	-	-	-
-	-	-	-	-
-	-	-	-	-
-	-	-	-	-
-	-	-	-	-
-	-	-	-	-
-	-	-	-	-
-	-	-	-	-
-	-	-	-	-
-	-	-	-	-

Ab	-	Zeichnung ueberarbeitet nach AR-Gruppenstandard, Teil unveraendert	26.10.12	mj
-	-	Oberflaechenvariante entfernt (3000)	-	-

Rev.	Anzahl/ quantity	Aenderungsbeschreibung / modification description	Datum/date	Name
------	---------------------	---	------------	------



Teichstrasse 57
 Germany - 79511 Loerrach
 Phone +49 (0) 7621 174-0
 Fax +49 (0) 7621 174-225

Bei Verstaendnisproblemen beantragen Sie bitte beim Absender die deutsche Fassung vor jeder Anwendung.
 "CONDITIONS OF USE"
 This drawing and all information (the "Drawing") disclosed are the exclusive property of ARaymond. By using this Drawing the Addressee acknowledge and accept that this Drawing (1) is covered by ARaymond' intellectual property rights or know-how and (2) is provided under the following conditions who represent a Deposit Agreement. This Drawing is for Addressee' Internal use only limited to its estimation. Without prior written consent of ARaymond, no permission or rights for any purpose, is hereby granted, such as, without any limitation, (1) the copy, in part or entirely, (2) and/or the presentation, in part or entirely, to any other third party outside the Addressee' company or in the company but with no interest (3) and/or the distribution of the Drawing, in part or entirely, in any medium (4) and/or the creation of any derivative work. In case of breach of these conditions, Addressee shall indemnify ARaymond from and against all damages (compensatory or consequential), costs, expenses and charges, caused or arising out of or attributable to its willful misconduct, fraud, negligence, infringement of ARaymond' intellectual property rights. If the Addressee does not accept these conditions, please notify ARaymond' sender immediately.

Intellectual property rights	vorbehalten / all rights reserved			Classification code	CGB--
Ersatz fuer/ substitutioe for	012070_c_01/Aa/22.02.2008	Entw.Ref./ dev.ref.		Projekt-Nr./ project no.	
Masstab/ scale	5:1	Allgemeintoleranz/ general tolerance	±0.3 / ±5°		
Format	A3	Datum/ date	26.10.2012		
Projektion / projection	ALL DIMENSIONS ARE IN MILLIMETERS	Erstellt von/ prepared by	M. Junge		
	Bleedicke/ mat. thickness DIN EN 10140	Freigegeben/ approved	20121102083125	Volumen/ volume (mm³)	84.5
	0.40	Gewicht/ weight (g)	0.7		
Oberfl. / finish	phosphatiert / impraegniert phosphated / oiled				Oberfl. Code/ finish code 5100
Werkstoffbehandl./ material treatment	zwischenstufenverguetet / austempered 475 ... 575 HV 5				
Werkstoff/ material	C67S DIN EN 10132-4				Mat. code 1000
Benennung/ title	U-Klammer edge clip				
Teil-Nr. / part no.	012070-0-01			Drawing type C:Customer	
Kundenteile-Nr. / customer part no.	-			Blatt / sheet 1 / 1	
CAD system & version	ProE WF4		Dateiname / filename 012070-0C00		