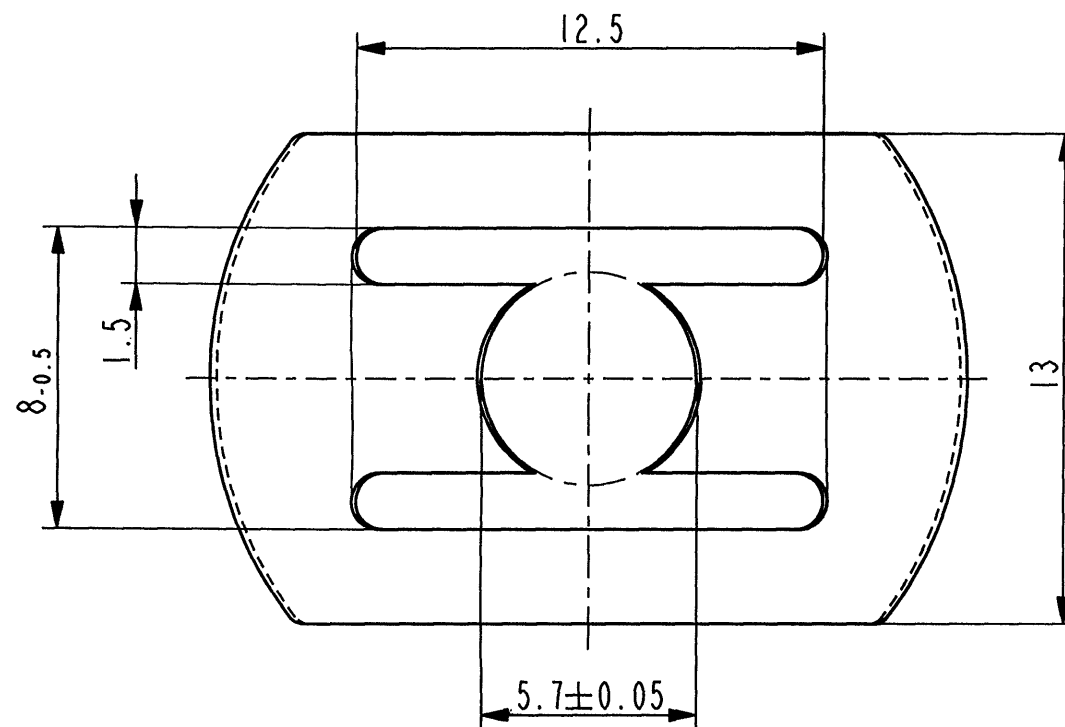
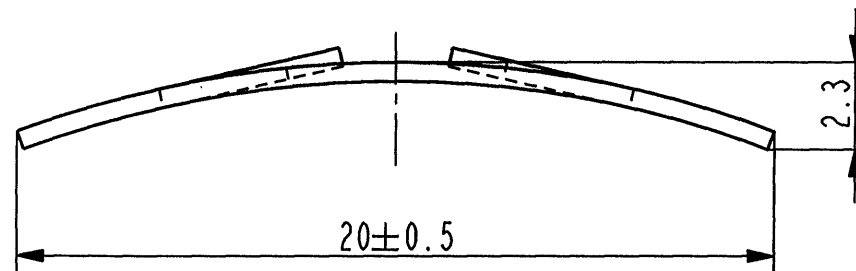




1:1
 fuer Bolzen $\varnothing 6_{H11}$



Ind.	how often	Beschreibung / Description	Datum/Date	Name
C	1x	Oberflaechenvariante hinzugefuegt	24.01.05	Ru
B	1x	Oberflaechen hinzug.	14.09.04	Ru
A	3x	Indexreform, Art.-Nr. gem. SAP geaendert; 20 ± 0.15 war 20 ± 0.5 wegen SPC30; $8_{-0.3}$ war $8_{-0.5}$;	31.03.04	Lin
-	-	Allgem.Tol. ± 0.2 war ± 0.3	-	-

Aenderungen / Modifications

Format DIN A3

SPEZIALBEFESTIGUNGSSYSTEME WELTWEIT / ENGINEERED FASTENERS WORLDWIDE

Bei Verstaendnisproblemen beantragen Sie bitte beim Absender die deutsche Fassung vor jeder Anwendung.
 "CONDITIONS OF USE"
 This drawing and all information (the "Drawing") disclosed are the exclusive property of A.Raymond. By using this Drawing the Addressee acknowledge and accept that this Drawing (1) is covered by A.Raymond' intellectual property rights or know-how and (2) is provided under the following conditions who represent a Deposit Agreement. This Drawing is for Addressee' internal use only limited to its estimation. Without prior written consent of A.Raymond, no permission or rights for any purpose, is hereby granted, such as, without any limitation, (1) the copy, in part or entirely (2) and/or the presentation, in part or entirely, to any other third party outside the Addressee' company or in the company but with no interest (3) and/or the distribution of the Drawing, in part or entirely, in any medium (4) and/or the creation of any derivative work. In case of breach of these conditions, Addressee shall indemnify A.Raymond from and against all damages (compensatory or consequential), costs, expenses and charges, caused or arising out of or attributable to its willful misconduct, fraud, negligence, infringement of A.Raymond' intellectual property rights. If the Addressee does not accept these conditions, please notify A.Raymond' sender immediately.

Dateiname/ Filename	CAD-PE: 011330_C_01		
Ersatz fuer/ Substitute for	Art.11330 Ac. Ind.3 v.17.05.1996	Proj.-Nr./ Proj.-No.	44645
		RASCH- Code	EAAZ-
		Vol.(mm ³)	-
		Gewicht/ Weight (g)	-

Schutzrechte/
Patent rights vorbehalten / all rights reserved

Gepr./ App.	<i>Ab</i>	F.-gepr./ Produktion	<i>Ze</i>	O.-gepr./ Quality	<i>Jo</i>	S.-gepr./ Patent app.	<i>We</i>
----------------	-----------	-------------------------	-----------	----------------------	-----------	--------------------------	-----------

Masstab / Scale	5:1	Allgem.Tol. wenn nicht anders angegeben/ General tol. unless otherwise specified	± 0.3	Datum/ Date	31.03.2004	Gez./ Drawn	Lindemann
-----------------	-----	---	-----------	----------------	------------	----------------	-----------

Oberflaechenbehandlg./ Finish	verzinkt/gelbchromatiert	Kennzahl/ Code number	3000
----------------------------------	--------------------------	--------------------------	------

Werkstoffbehandlg./ Material treatment	zwischenstufenverguetet 435 ... 535 HV 5	Blechkicke/ Mat.Thickn. DIN EN 10 140	0.5
---	---	---	-----

Werkstoff/ Material	C 67 S DIN EN 10 132-4	Mat.-Code	1000
------------------------	------------------------	-----------	------

Benennung/ Partname	Federmutter		
------------------------	-------------	--	--

Teil-Nr./ Part-No.	011330 001	C
-----------------------	------------	---

①	011330 003	mechanisch verzinkt/ passiviert farblos	3630
②	011330 002	verzinkt/passiviert farblos	3250
	Teil-Nr. / Part-No.	011330 001	Kennzahl / Code
	Ausfuehrung / Execution		